

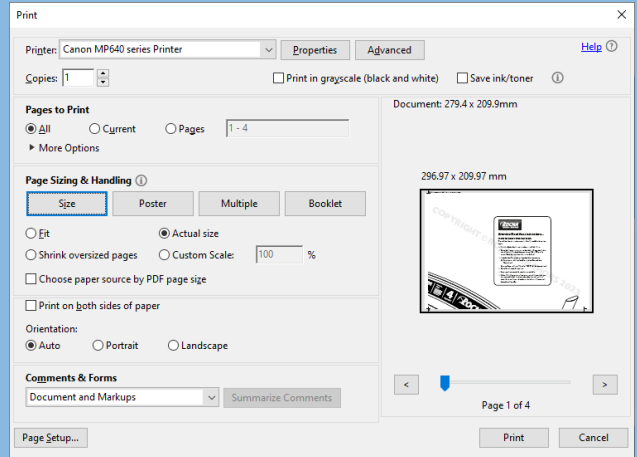


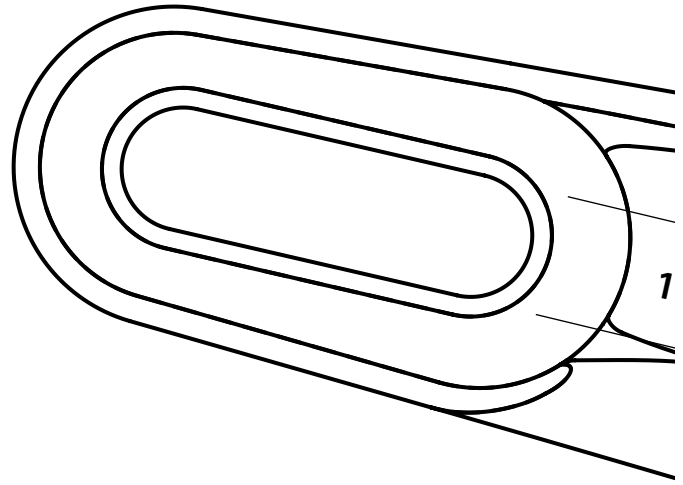
## Attention! Read these instructions...

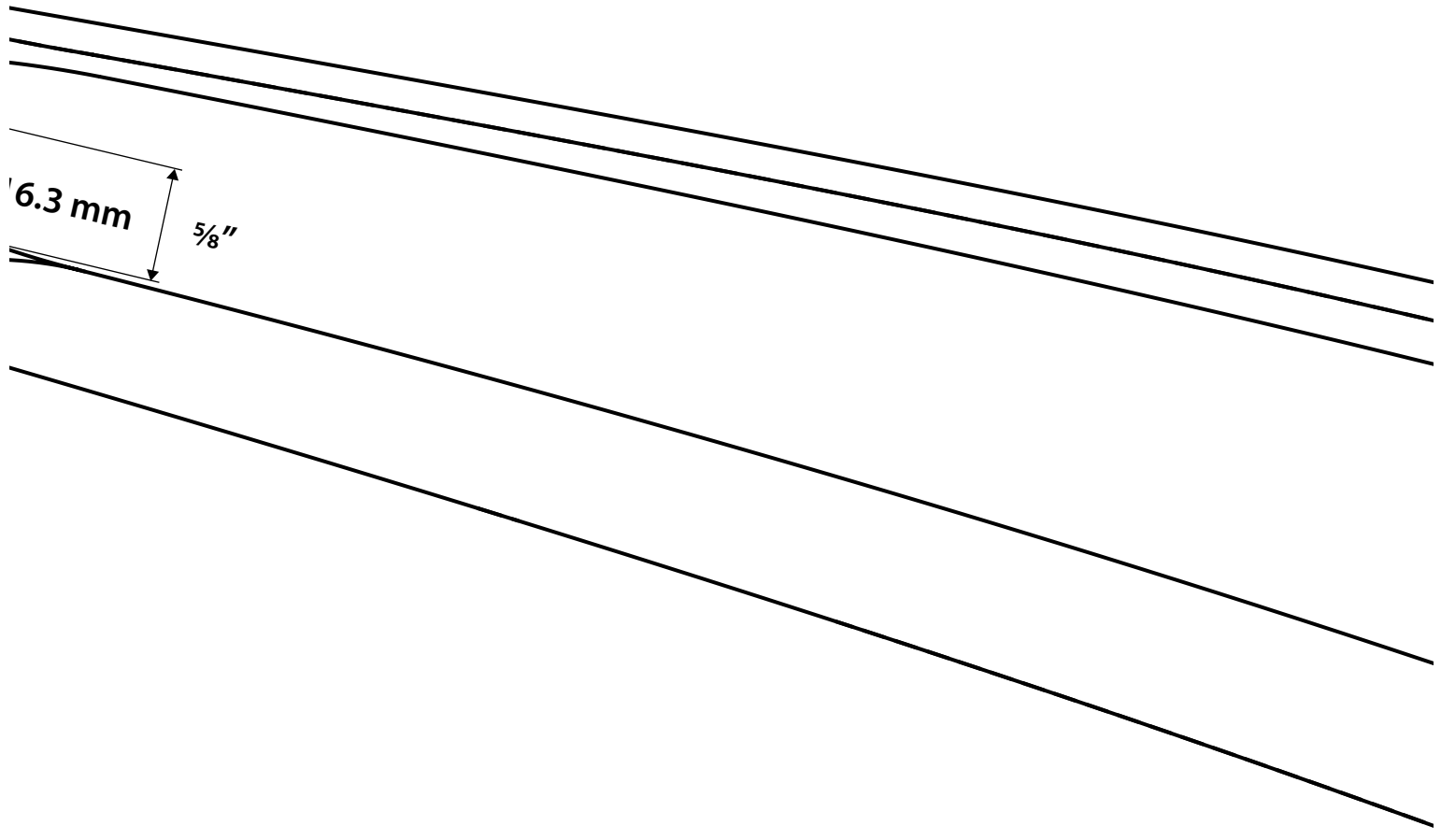
### HOW TO PRINT THIS PATTERN

Please follow these instructions to print. You will need A4 or letter size paper:

- ▶ From the Adobe Acrobat main window, go to **File > Print...**
- ▶ Select the printer you want to use, then click on **Properties**. In the new dialog window, check the paper format (A4 or US letter) is correct. Close the properties dialog when finished.
- ▶ In the Acrobat Print window, adjust the following settings:
  - Very important: Under **Page Sizing**, select **Size**, and then **"Actual size"**,
  - or set **Page scaling** to **"None"** or **"100%"** (old Acrobat versions).
- ▶ Select **"Auto"** under **Orientation**.
- ▶ Ensure you have enough sheets of paper available.
- ▶ Click on **Print**. Your printer will output a series of sheets which you can reassemble. Each sheet is numbered by (row, column) in its upper left corner. Line up the edge-marks to form a 1:1 pattern of the anchor side profile.







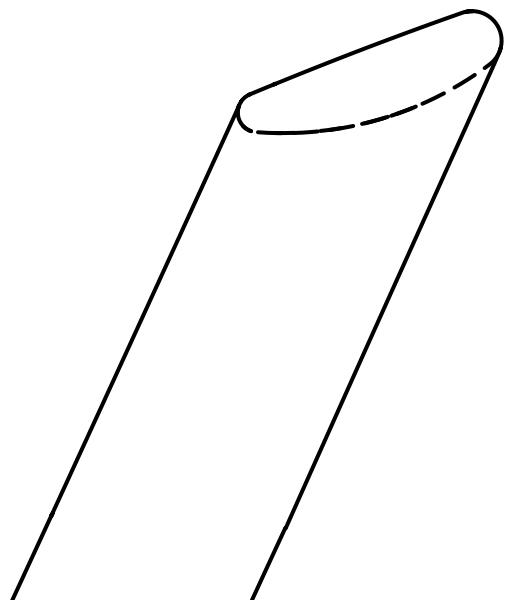
**ROCNA**  
ANCHORS // ROCK SOLID

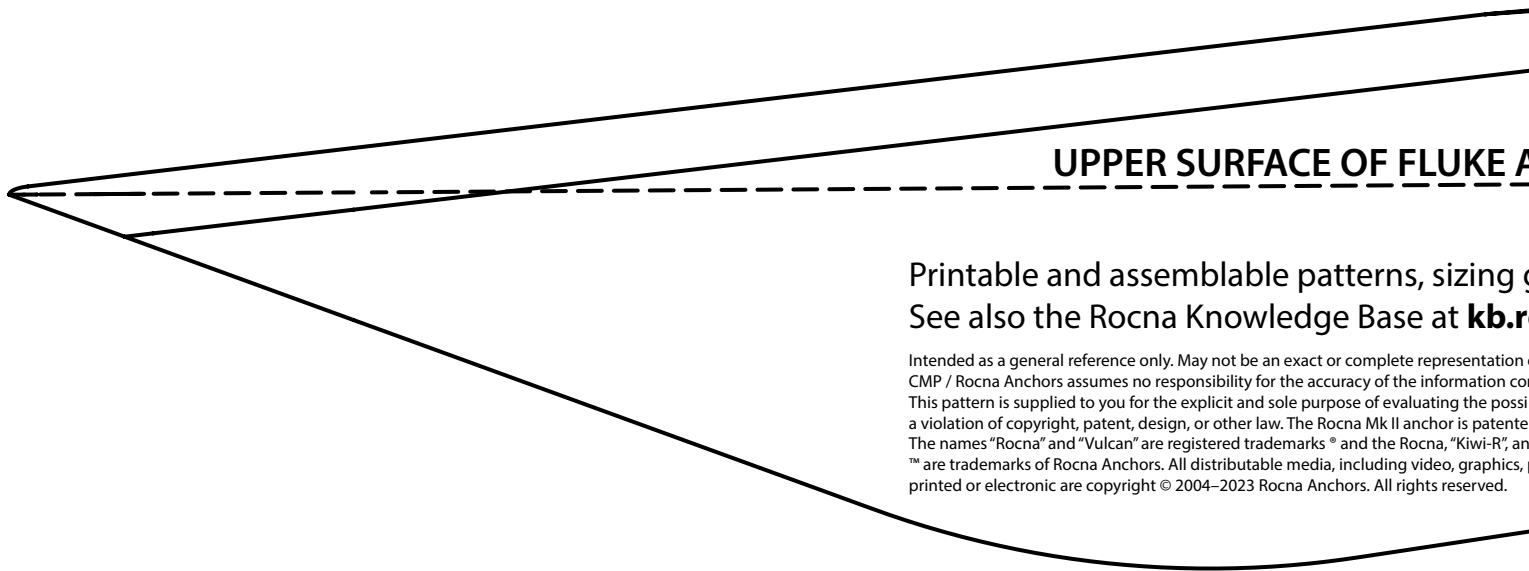
*Signature*  
Designed by Peter Smith

Rocna.com  
**CMP11**

Covered by one or more  
of patents: US8950352,  
NZ602454, NZ620976,  
CA2790598, CA2922499,  
GB2505931, GB2518531  
\*Weights may vary.

**2**  
20 kg / 44 lb

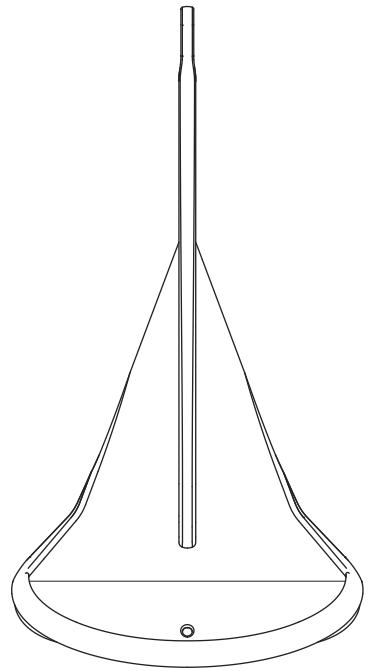




**UPPER SURFACE OF FLUKE A**

Printable and assemblable patterns, sizing 1/4  
See also the Rocna Knowledge Base at **kb.r**

Intended as a general reference only. May not be an exact or complete representation of the actual anchor.  
CMP / Rocna Anchors assumes no responsibility for the accuracy of the information contained herein.  
This pattern is supplied to you for the explicit and sole purpose of evaluating the possibility of a  
violation of copyright, patent, design, or other law. The Rocna MK II anchor is patented.  
The names "Rocna" and "Vulcan" are registered trademarks ® and the Rocna, "Kiwi-R", and "Rocna"  
are trademarks of Rocna Anchors. All distributable media, including video, graphics, printed or  
electronic are copyright © 2004–2023 Rocna Anchors. All rights reserved.

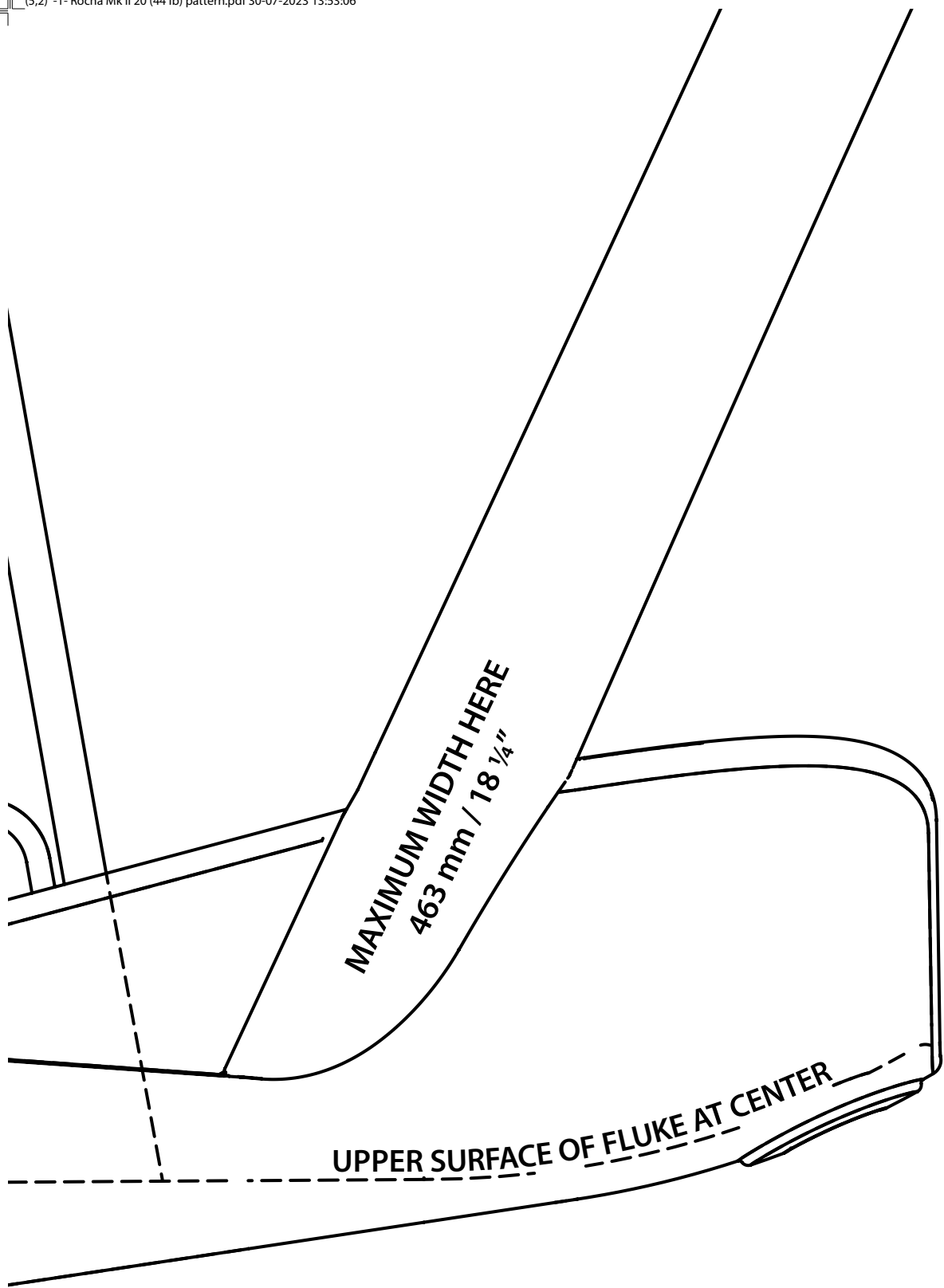


**TOP VIEW**

**AT CENTER**

guidelines, and more resources are available at **Rocna.com**.  
**rocna.com**. For further assistance e-mail **support@rocna.com**.

of the product. Dimensions may vary. Contents based on the latest information available at the time of publication.  
ntained herein. Product specifications are subject to change without notice.  
ible fit of a Rocna anchor on a vessel. Any other use of this document may constitute  
ed as described on the label above.  
nd Vulcan logos, and other terms marked with  
photography, and all copy



MAXIMUM WIDTH HERE  
463 mm / 18 1/4"

UPPER SURFACE OF FLUKE AT CENTER