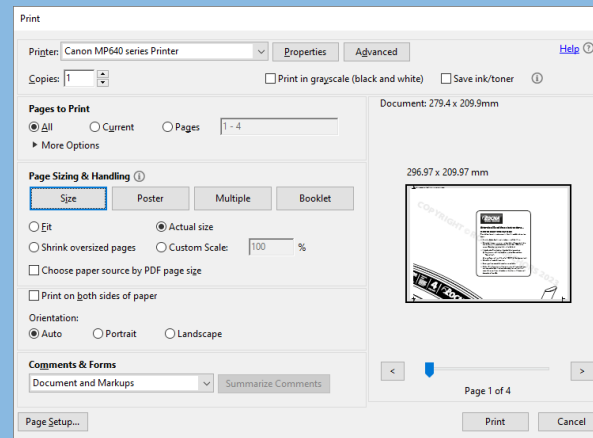


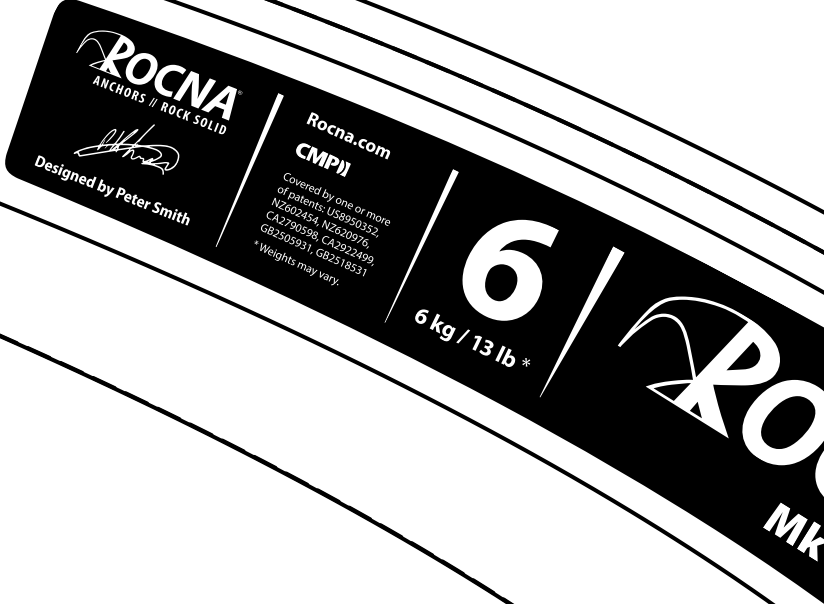
## Attention! Read these instructions...

### HOW TO PRINT THIS PATTERN

Please follow these instructions to print. You will need A4 or letter size paper:

- ▶ From the Adobe Acrobat main window, go to **File > Print...**
- ▶ Select the printer you want to use, then click on **Properties**. In the new dialog window, check the paper format (A4 or US letter) is correct. Close the properties dialog when finished.
- ▶ In the Acrobat Print window, adjust the following settings:
  - Very important: Under **Page Sizing**, select **Size**, and then **"Actual size"**,
  - or set **Page scaling** to **"None"** or **"100%"** (old Acrobat versions).
- ▶ Select **"Auto"** under **Orientation**.
- ▶ Ensure you have enough sheets of paper available.
- ▶ Click on **Print**. Your printer will output a series of sheets which you can reassemble. Each sheet is numbered by (row, column) in its upper left corner. Line up the edge-marks to form a 1:1 pattern of the anchor side profile.





**ROCNA**  
ANCHORS // ROCK SOLID

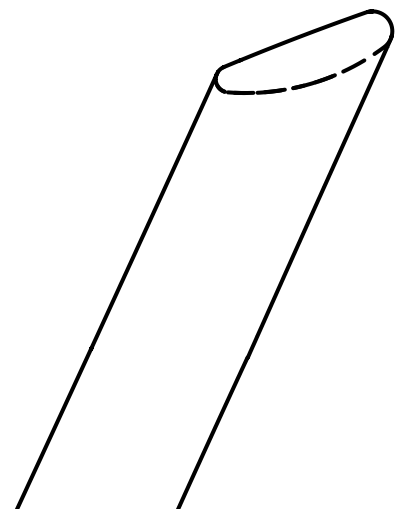
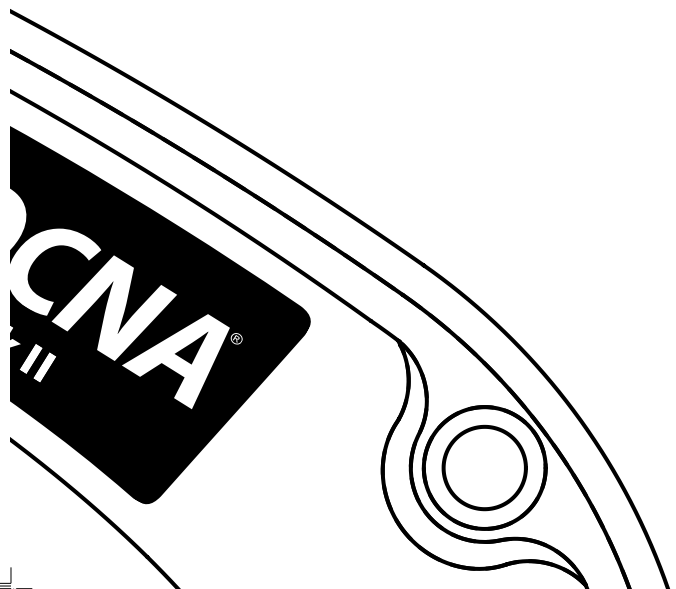
*Designed by Peter Smith*

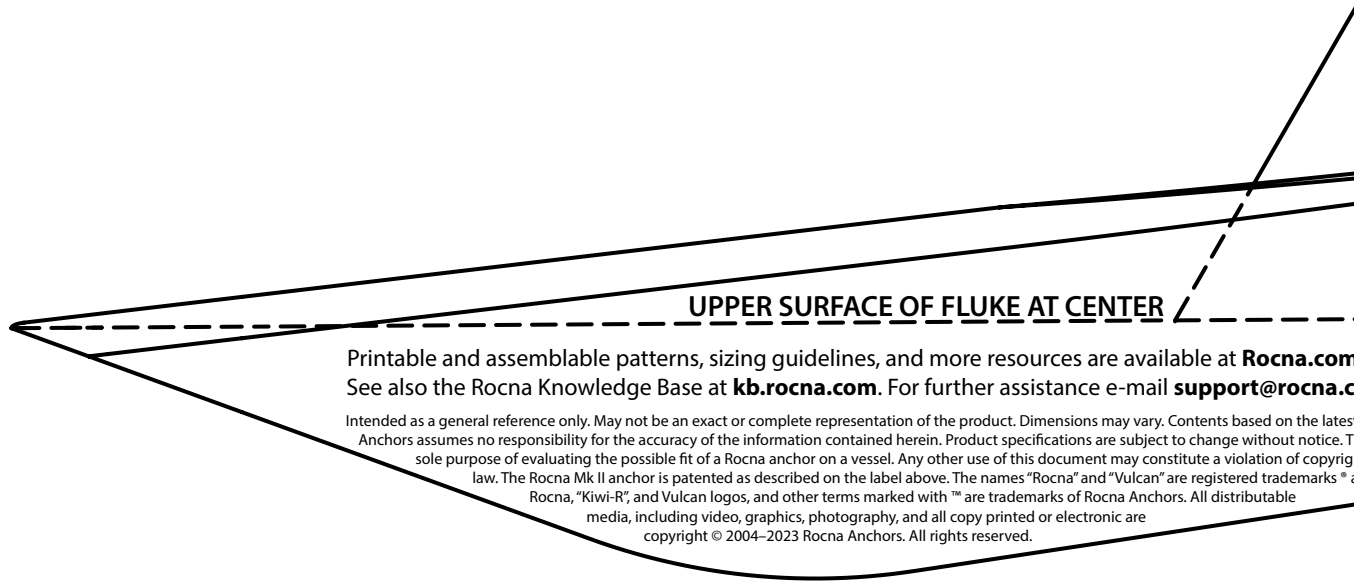
Rocna.com  
**CMP11**

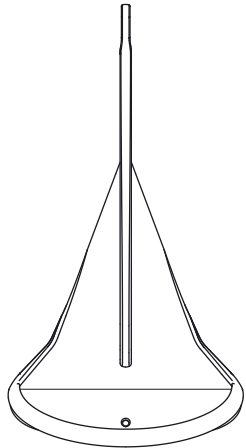
Covered by one or more of patents: US8905032, NZ6602454, NZ6501976, CA2790598, CA2922499, GB2505931, GB2518531  
\*Weights may vary.

**6**  
6 kg / 13 lb \*

**ROCNA**  
MK II







TOP VIEW

MAXIMUM WIDTH HERE  
310 mm / 12 <sup>3</sup>/<sub>16</sub> "

UPPER SURFACE OF FLUKE AT CENTER - - -

n.  
com.

st information available at the time of publication. CMP / Rocna  
This pattern is supplied to you for the explicit and  
ght, patent, design, or other  
and the